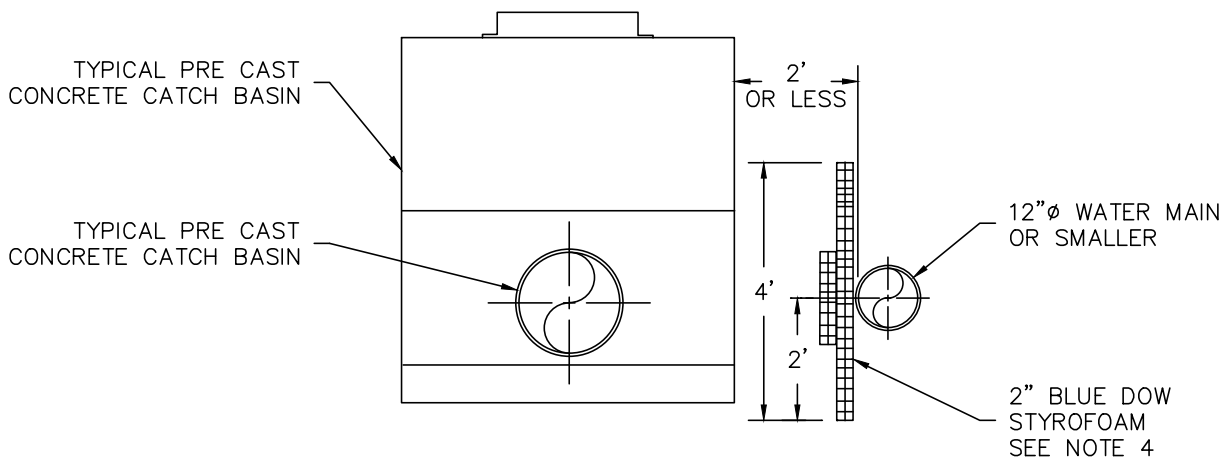


PLAN VIEW



ELEVATION VIEW

NOTES:

1. ALL MATERIALS AND INSTALLATION PROCEDURES WILL CONFORM TO P.W.W. TECHNICAL SPECIFICATIONS.
2. ALL PIPE SHOULD HAVE A MINIMUM DEPTH OF 5' FROM TOP OF PIPE TO FINISH GRADE.
3. P.W.W., INC. RESERVES THE RIGHT TO MODIFY INSULATION REQUIREMENTS AS NECESSARY BASED ON FIELD CONDITIONS, ETC.
4. ALL BUTT JOINT SEAMS TO BE OVERLAPPED WITH 1' PIECE OF INSULATION CENTERED OVER SEAM.



DETAIL W-5
TYPICAL CATCH BASIN
INSULATION DETAIL
 TOWN OF HANOVER
 REV: 6/14 BY: PEK SCALE: NTS