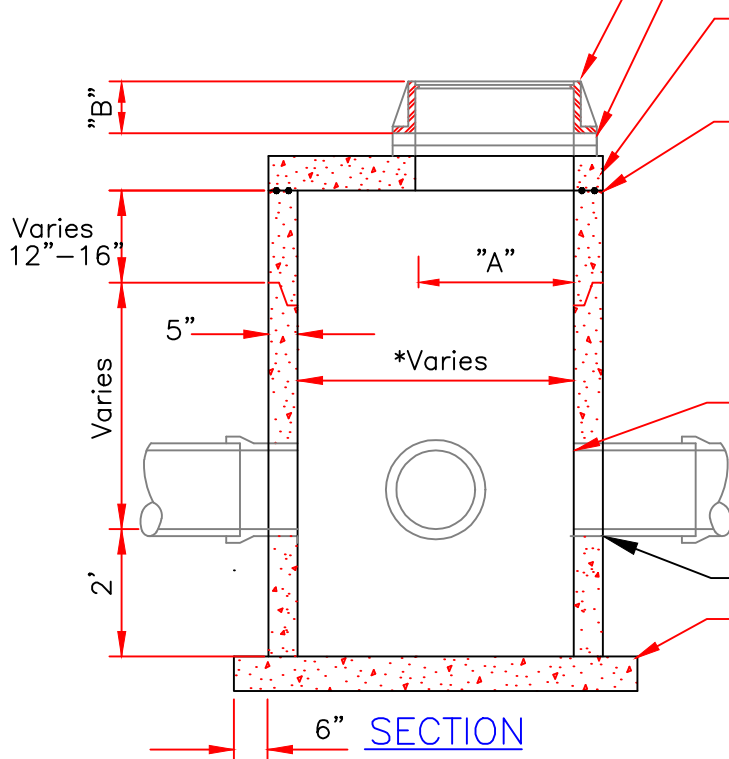


Precast invert should be 1/2 diameter of pipe and benches sloped 2" toward invert.

CASTING	A	B
R1642	27"	7"

PLAN

For 6' diam. Manhole an 8" precast slab is required.



All pipe penetrations shall be cored and booted per detail D-6 PIPE PENETRATION.

No block structures shall be allowed.

Neenah frame and type B cover or equal lettered, "Storm Sewer", with 2 concealed pick holes.

Minimum of 2, maximum of 5 HDPE adjustment rings

6" Precast Reinforced Concrete Manhole Slab with #4 Bars at 5" o.c. Each Way and 2-#4 Bars at all Sides of Opening.

Top of barrel section below top slab to have flat top edge sealed with 2 beads of Ramnek or equal.

Pipe shall be cut out flush with inside face of wall.

SEE D-6 PIPE PENETRATION DETAIL

Minimum slab thickness is 6" for 14' depth. Increase thickness 1" for every 4' of depth greater than 14', and reinforce with 6" x 6" 10/10 mesh.

SECTION

*Determined by pipe size



DETAIL D-4
FLAT TOP CATCH BASIN
TOWN OF HANOVER
REV: 06/14 BY: PEK SCALE: NTS