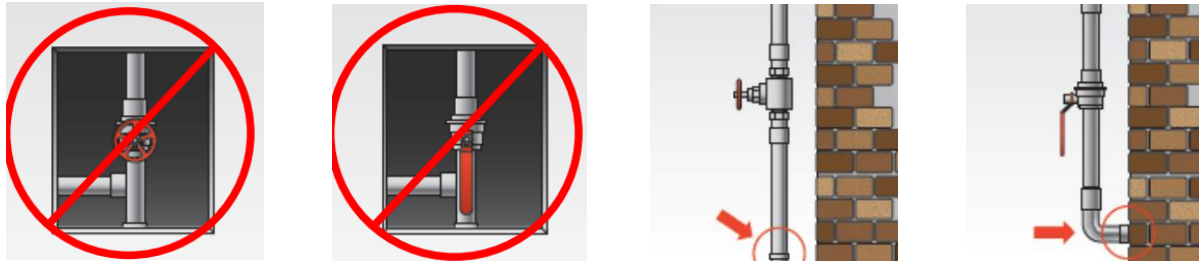




Water Service Line Material Identification Guide

Step 1:

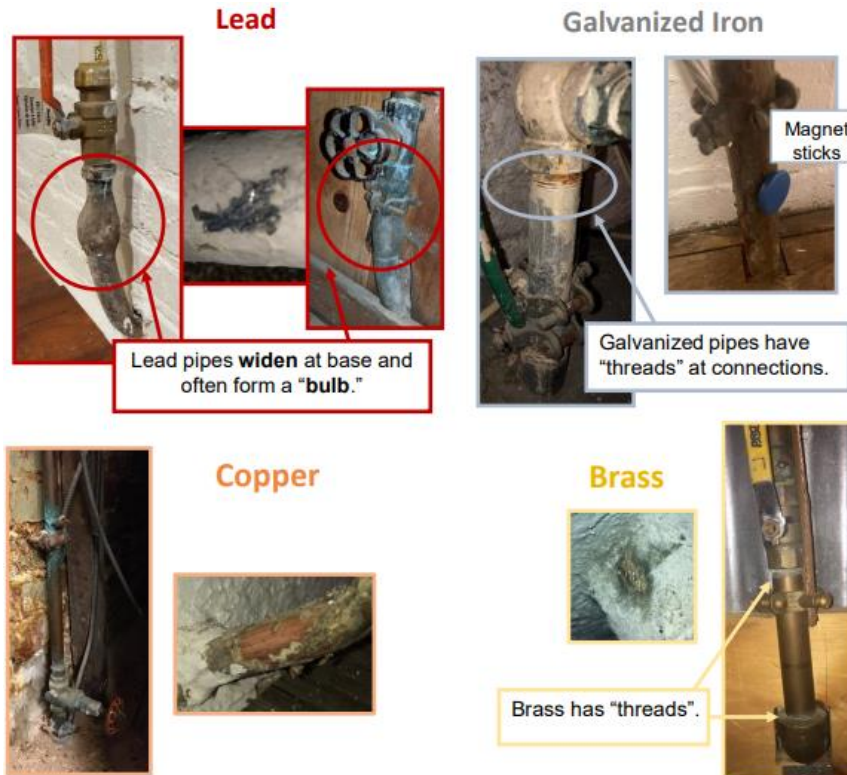
Locate the water service line entering the building. The pipe must be coming through the floor or wall. It is typically found in the basement.



Step 2:

Take a picture of the line coming out of the wall/floor and identify the material of the pipe utilizing the table and pictures shown below.

	Lead	Galvanized Iron	Copper	Plastic	Brass
Outer Appearance	Dull silver-gray color; Bendable; Often curves between wall/floor and valve	Dull, dark or silver-gray or black color; Straight Rigid Pipe	Copper color like a penny and possible green corrosion spots	White, rigid	Dark Reddish brown to light silvery color; may contain green corrosion spots
Threads at Connections	None	Yes	No	No	Yes
Scratch Test (coin or key)	Shiny Silver and soft debris	Does not scratch	Shines like a penny	Does not scratch	Gold Color
Magnet Test	Does not stick	Does Stick	Does not tick	Does not stick	Does not Stick



If you are unable to confidently identify the material, contact the Public Works Department at 6036403384 or Christina.Hall@Hanovernh.org to schedule an appointment.

Optional: Identify the material of the pressure reducing valve and/or the material of the pipe coming from the water meter into your home. Take a picture of the water meter as to be able to see the piping coming into and out of it.

Step 3:

Visit the link <https://tinyurl.com/5n7za8fa> and fill out the form, or fill out the paper form provided and mail it to 194 Lebanon St, Hanover, NH 03755 to confirm the material to the Public Works Department.